

# Preventing Neglect through Evidence-Based Parenting Programs: Research from SafeCare®

Melissa C. Osborne, PhD, MPH  
Clinical Assistant Professor  
School of Nursing, Georgia State University

# SafeCare Overview

The background of the slide features abstract, overlapping geometric shapes in various shades of blue, ranging from light sky blue to deep navy blue. These shapes are primarily located on the right side of the slide, creating a modern and professional aesthetic.

# SafeCare

Short. Targeted. Effective.

- Behaviorally-based curriculum
- For parents with children 0-5 years
  - Involved in child welfare and/or served in prevention settings
- 18 session program, delivered in the home setting
- 60 minute sessions
- Highly structured but flexible in its delivery
  - Depends on parent's initial skills and skill acquisition

# SafeCare<sup>®</sup> Module Structure

Session 1  
Assessment



Sessions  
2-5  
Training



Explain  
Model  
Practice  
Feedback

Session 6  
Re-assessment



# SafeCare

- Includes 3 modules with specific target skills
  - **Parent-Child Interaction.**
    - *Goal:* To support parent in mastery of specific interaction skills with their young children, and skills for structuring daily living activities
  - **Home Safety.**
    - *Goal:* To support parent in identifying and eliminating home safety and health hazards, and to provide appropriate supervision for their young children
  - **Child Health.**
    - *Goal:* To support parent in promoting health through prevention, and making systematic health decisions when their child is ill or injured

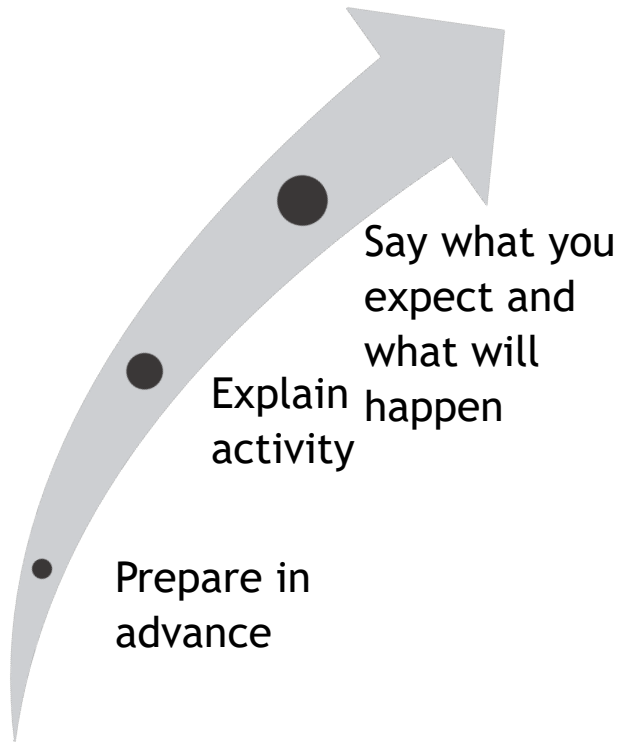
# SafeCare

## Parent – Child Interaction Module

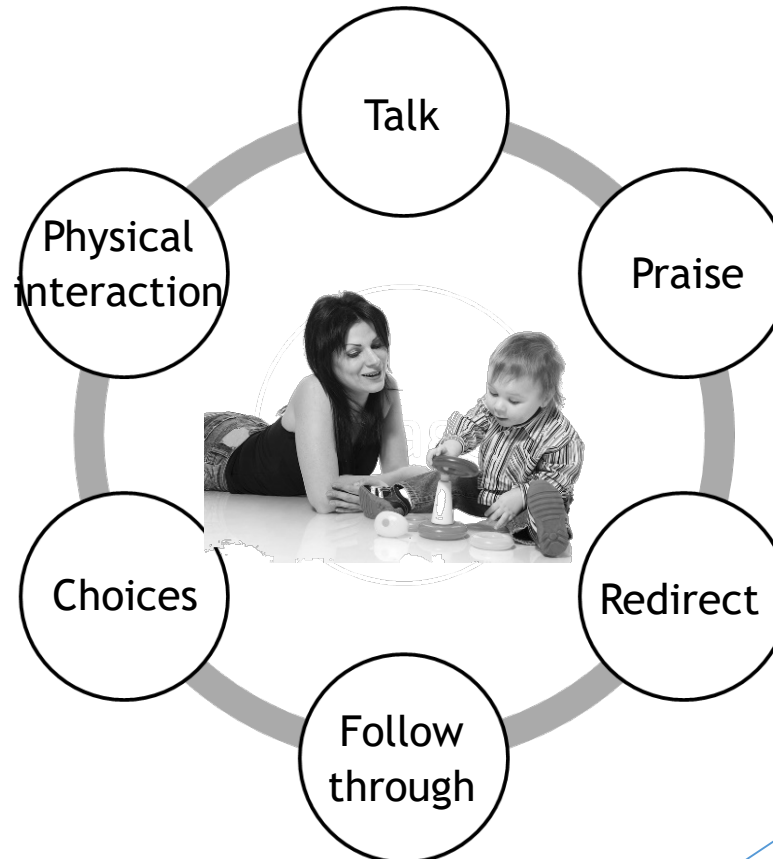
- PII: Infants up to 18 months
- PCI: 18 months and older
  
- Teach parents strategies to:
  - Enhance their parent-child relationships
  - Plan and organize daily and play activities
  - Positively interact with their children
  - Prevent challenging child behavior

# SafeCare

## BEFORE



## DURING



## END



# SafeCare

## Home Safety Module

Teach parents to:

- Understand the importance of a safe home
- Know the types of hazards in homes
- Know ways to remove household hazards
- Understand the importance of supervision





# SafeCare

## Safety Skills: Hazard Categories



Suffocation



Drowning



Fire/Electrical



Choke



Organic/Allergen



Fall/  
Activity Restriction



Poison



Firearm



Sharp



Crush

## SafeCare Home Accident Prevention Inventory (HAPI)

Provider's assessment of home safety hazards

### Home Accident Prevention Inventory—HAPI

#### Assessment Form

Parent \_\_\_\_\_ Child \_\_\_\_\_ Provider \_\_\_\_\_

Child's Reach \_\_\_\_\_ Child's Eye-level \_\_\_\_\_

Room \_\_\_\_\_ Session # \_\_\_\_\_ Date \_\_\_\_\_

Assessment Baseline Training End of Module Assessment Type Formal Informal

POISON	Hazard item (count)	Total
Beauty products		
Medications		
Cleaning products		
Paints, solvents, etc.		
Pesticides, herbicide, etc.		
Poisonous plants		
Alcoholic beverages		
Tobacco, THC, or nicotine		

CHOKES	Hazard item (count)	Total
Small objects (e.g., toys, candies, push pins, etc.)		

SUFFOCATION	Hazard item (count)	Total
Cords		
Plastics		
Sleep hazards [infant homes]		

DROWNING	Hazard item (count)	Total
Standing water in basins		
Unsecured toilet		

# SafeCare

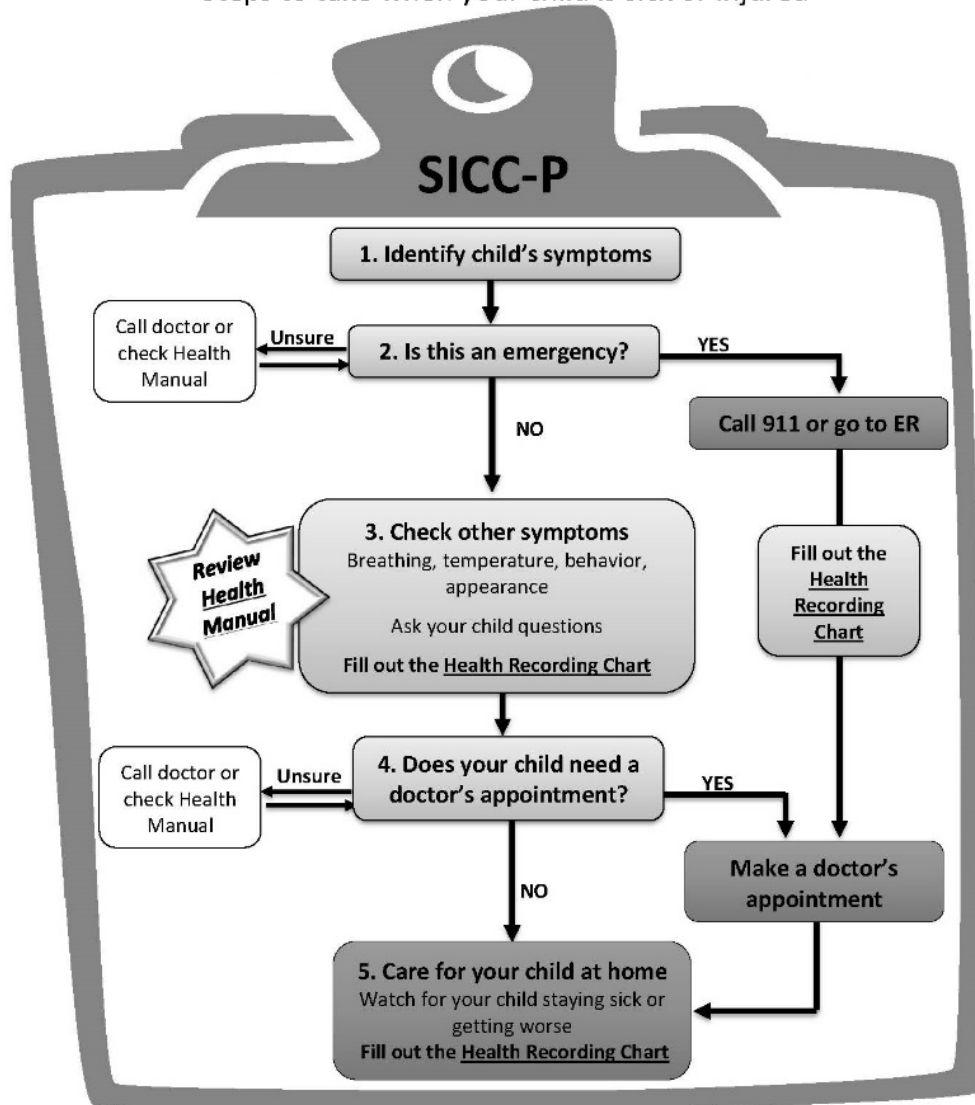
## Health Module

Teaches parents how to:

- Keep children as healthy as possible
- Prepare for when child is sick or injured
- Recognize when symptoms:
  - Need emergency care
  - Need a doctor's appointment
  - Can be cared for at home
- Use reference materials
- Keep good health records

## The Sick or Injured Child Chart – Parent

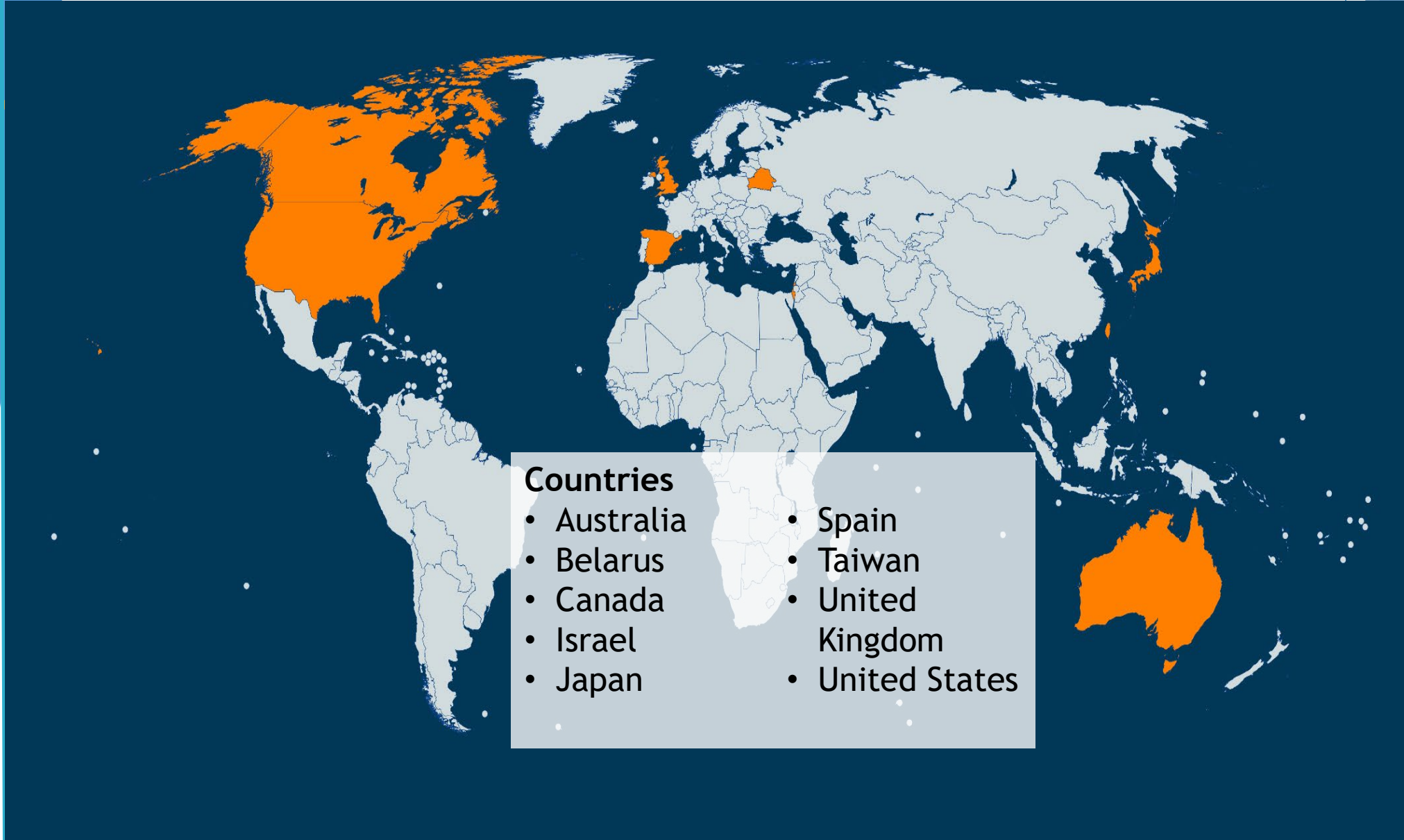
Steps to take when your child is sick or injured



# SafeCare



# International Reach



## Countries

- Australia
- Belarus
- Canada
- Israel
- Japan
- Spain
- Taiwan
- United Kingdom
- United States

# Addressing Neglect

- ▶ SafeCare addresses neglect through:
  - ▶ Increasing positive interactions
  - ▶ Focus on hazard identification and supervision in keeping children safe at home
  - ▶ Building skills to appropriately identify and address medical needs
- ▶ Implemented in a variety of settings
  - ▶ Child welfare
  - ▶ Preventive settings

# SafeCare Research



# Research and Evaluation Findings

- ▶ Numerous studies have shown SafeCare's efficacy and effectiveness in a variety of outcomes
  - ▶ Visit <https://safecare.publichealth.gsu.edu/evidence-based-model/> to view a list of published studies
- ▶ Compared with services as usual, SafeCare:
  - ▶ reduced subsequent reports by 26% (Chaffin et al., 2012)
  - ▶ improved positive parenting behaviors (Whitaker et al., 2020)
- ▶ From baseline (pre-services) to completion (post-services), SafeCare families:
  - ▶ show a reduction in home safety hazards (89%; Beachy-Quick et al., 2018)
  - ▶ show health skills improvement (Beachy-Quick et al., 2018)
  - ▶ report changes in neglect based on self-report measures (Churchill et al., 2015; Gallitto et al., 2020)
  - ▶ no longer require legal intervention due to neglect concerns (66%; Churchill et al., 2015)

# Remaining Questions and Future Directions

- ▶ Measurement
  - ▶ Limitations of self-report measures
  - ▶ Parents rate themselves favorably at baseline
- ▶ Longer follow-up
- ▶ Closer look into types of neglect

# Contact Information

Melissa C. Osborne, PhD, MPH  
School of Nursing, Georgia State University  
[mcowart6@gsu.edu](mailto:mcowart6@gsu.edu)  
Twitter: [@MOsbornePhD](https://twitter.com/MOsbornePhD)

For more information on SafeCare training contact Dr. Shannon Self-Brown, co-Director of NSTRC at [sselfbrown@gsu.edu](mailto:sselfbrown@gsu.edu) or visit <https://safecare.publichealth.gsu.edu/training-support/>